

HILLCON



HILLCON HSCX700 GLS

- * *Leader length up to 43 meter*
- * *For driving prefab, steel and cast-in-situ piles.*
- * *Suitable for 400 kN/m rotary head.*

SPECIFICATIONS:

Engine	Type	Isuzu 6HK1X (TIER 3)
	Rated output	212 kW (288 hp) at 2000 rpm
	Max. Torque	1125 N m / 1.500 rpm
	Fuel tank	300 Liter
Hydraulics		Kawasaki pumps
Leader	Max. Leader length	43 meters (self erecting up to 37 meters)
	Max. rake position forward	18.5 degrees (3:1)
	Max. rake position backward	18.5 degrees (3:1)
	Max. correction sideways	2.5 degrees (20:1)
	Measurements leader guiding	720 x 120 x 60 mm
	Maximum extraction force:	
	80 ton	on 8 part lines at 37,2 meter leader
	65 ton	on 8 part lines at 40,2 meter leader
Bracket	Shortest size (bracket totally in)	4.025 mm
	Range	1.000 mm
	Height adjustments	750 mm under normal 450 mm above normal
Supports	Back support cylinders	ca. 4.500 mm from centre slewing ring

Weights HSCX 700 GLS:

	Weight (kg) Operational	Weight (kg) Transport position	Notes
1 Base machine	Ca. 56.585	Ca. 56.585	Without counter weight and tracks
2 Counter weight (8 pcs)	24.800	24.800	
3 Leader sections	16.060		Excl. transport piece / incl. leader head
4 Lift platform	400		
5 Power pack frame	1.400	1.400	
6 Extra winches	2.500	2.500	3de / 4de / liftlier
<u>Total</u>	<u>Ca. 99.850 kg</u>	<u>Ca. 85.285 kg</u>	

Total machine weight without powerpack, powerpackframe, rotary head, pile or tube.

Tubular leader (720 x 120 x 60):

Leader part	Length	Weight (kg)	Remarks
1 Foot piece	1,70 meter	1.050	With hinge point and cylinder for passe partout, excluding arms. Pull down*.
2 Transport piece	7,50 meter	2.728	Incl. preparation for hydr. tubing*.
3 Extension piece	7,80 meter	3.012	Incl. preparation for hydr. tubing*.
4 Extension piece w/ locks	7,80 meter	3.100	Incl. hose yoke*.
5 Extension piece	3,90 meter	1.674	With erection connection.
6 Extension piece	3,90 meter	1.352	
7 Extension piece	3,40 meter	1.440	With adaptor to construction leader and erection connection.
8 Leader head / construction extension.	1,20 meter	2.320	Man-lift guiding from tubular leader.
9 Total	37,20 meter	16.676 kg	Self erecting
10 Optional leader extension piece	3,0 meter	1.110	Tubular leader piece
11 Optional leader extension piece	3,0 meter	1.002	Construction leader piece
12 Total	43,20 meter	18.788 kg	Not self erecting

- Man-lift guiding over the total length of leader.
- Anti-slip adhesives on the back of the leader.
- Hydraulic tubing; 2 x 2" pressure and return and 1 1/4" drain*

*** Optional**

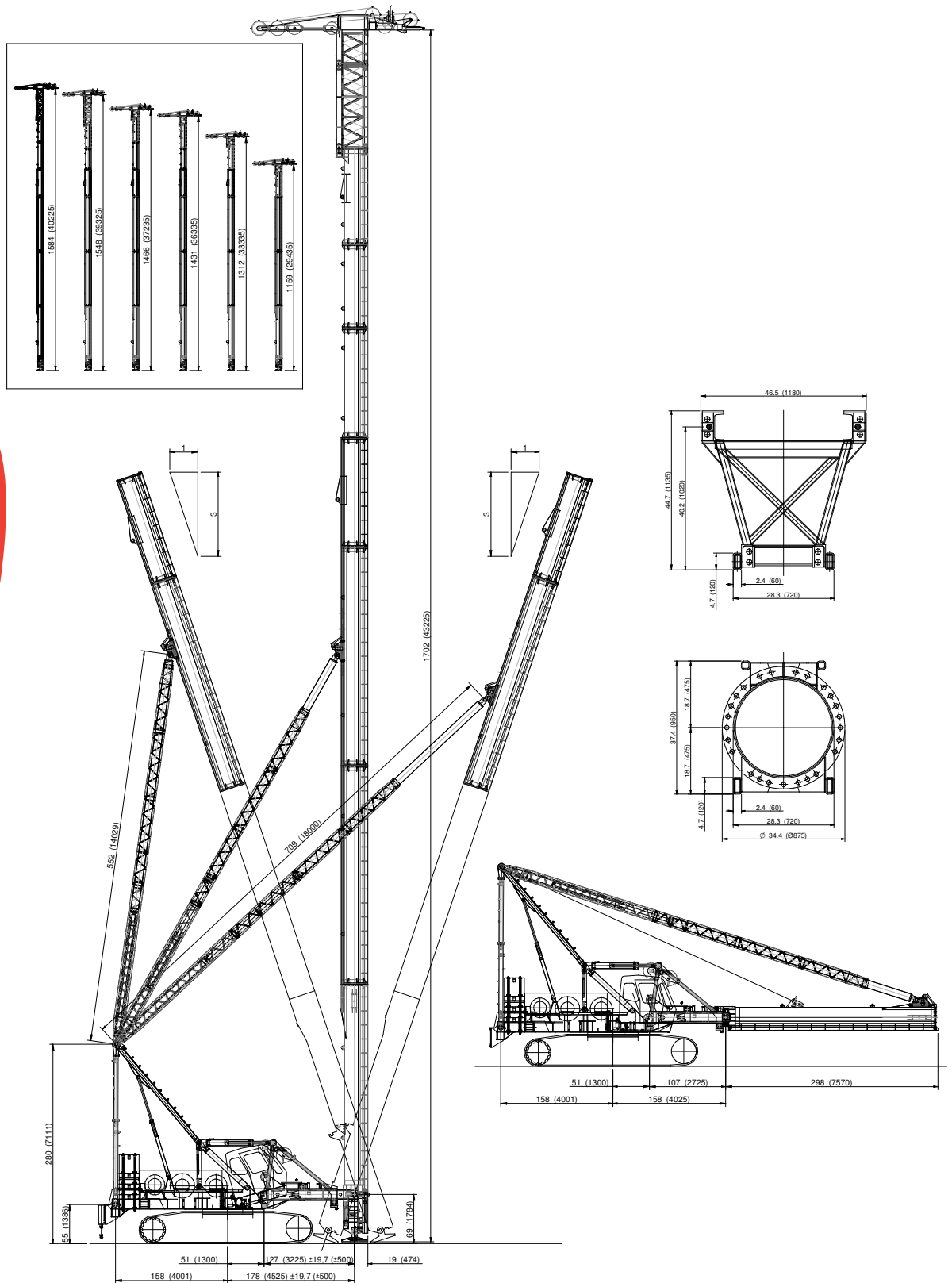
Torque:

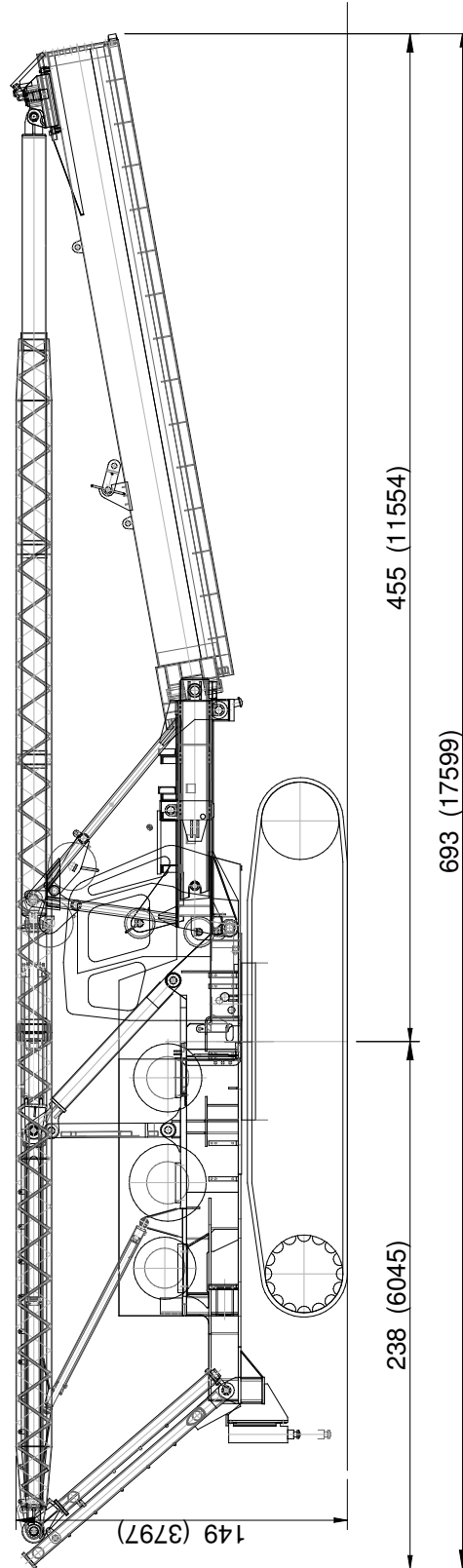
40 ton-meter	up to 9,2 meter
35 ton-meter	up to 17 meter
25 ton-meter	up to 40,2 meter

Max. pull:

65 ton (with 40,2 meter leader length)
80 ton (with 37,2 meter leader length)

HILLCON





TRANSPORT DIMENSIONS

Winches	Cable diameter	Max. pull force	Set pull force	Max. pull load	Nr. of parts
Main winch	22 mm	150 kN	121 kN	24 t.	1 of 2
Service winch	22 mm	150 kN	108 kN	80 t.	8
3rd winch	20 mm		81 kN	16 t.	1 of 2
4th winch	14 mm		30 kN	3 t.	1
Lift winch	10 mm		8 kN	0,8 t.	1
Erection winch	16 mm	89,5 kN	65 kN	69,8 t.	12
Guy wires	34 mm		410 kN	83,7 t.	2

Winches	Location (always in sight of operator)	Application
Main winch	On base frame (on front)	Lifting / cuble / pull down / pile insulation
Service winch	On base frame (on back)	Pull hammer / vibro / drill
3rd winch	Middle of bracket	Cuble / heavy reinforcement
4th winch	Middle on front of bracket	Reinforcement
Lift winch	Left front of bracket	Manlift
Erection winch	On base frame (at back)	Lifting of leader
Guy wires		Lifting of leader